

2 ENTERIC DISEASES

a Typhoid fever cases in South Africa: January-March 2016

As of 14 April 2016, a total of 52 laboratory-confirmed typhoid fever case-patients including two deaths have been reported in six provinces across South Africa, with 21 cases reported in January, 19 cases in February, eight cases in March and four cases in April (Figure 5). Where age was reported (n=51), age range is 9 months to 68 years (mean 19 years; median 14 years) and 31% (16/51) are children aged <10 years. Females account for 56% (n=29) of cases reported. Amongst the contacts in which stool specimens were collected and tested, *S. Typhi* has been isolated from the stool of a single contact of a case-patient in Gauteng Province. Amongst the 43 case investigation forms (CIFs) received by NICD, travel history is available for 41 case-patients. Amongst the 41 case-patients, 21 (51%) reported a history

of travel outside their hometown/city within 1 month before the onset of illness. Travel history was to Limpopo Province (n=2), Eastern Cape Province (n=1), KwaZulu-Natal Province (n=2), Zimbabwe (n=10), Malawi (n=1, deceased), India (n=2), India/Seychelles (n=1), Bangladesh (n=1) and USA (n=1). Of the 20 case-patients without travel history, four had visitors who had travelled from the Eastern Cape Province (n=1), Gauteng Province (n=2), and Tanzania (n=1) respectively. Data on the monthly numbers of typhoid cases in South Africa for 2013-15 is shown in Figure 6.

Source: Division of Public Health, Surveillance and Response, NICD-NHLS (outbreak@nicd.ac.za); Centre for Enteric Disease, NICD-NHLS (karenk@nicd.ac.za)

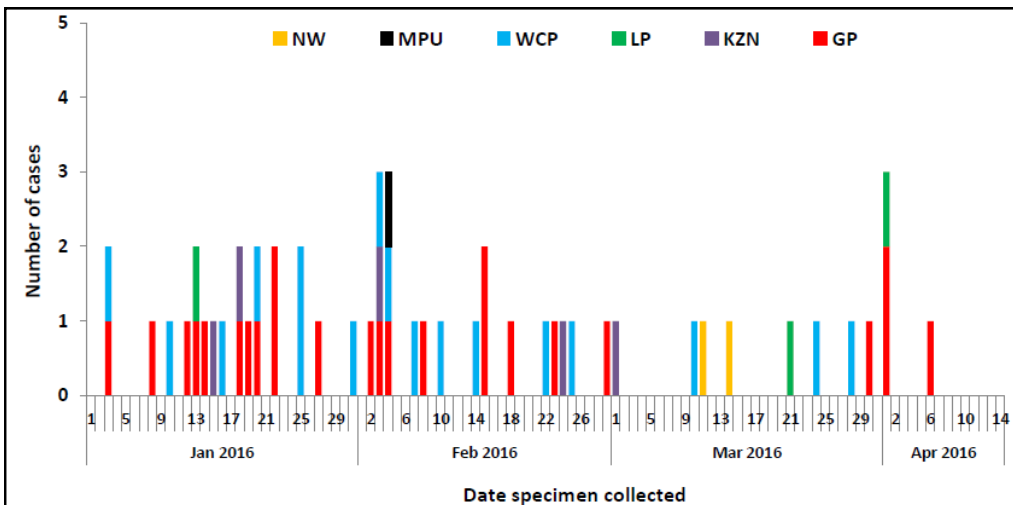


Figure 5. Epidemiological curve showing number of cases of typhoid identified in South Africa by province, and date of specimen collection.

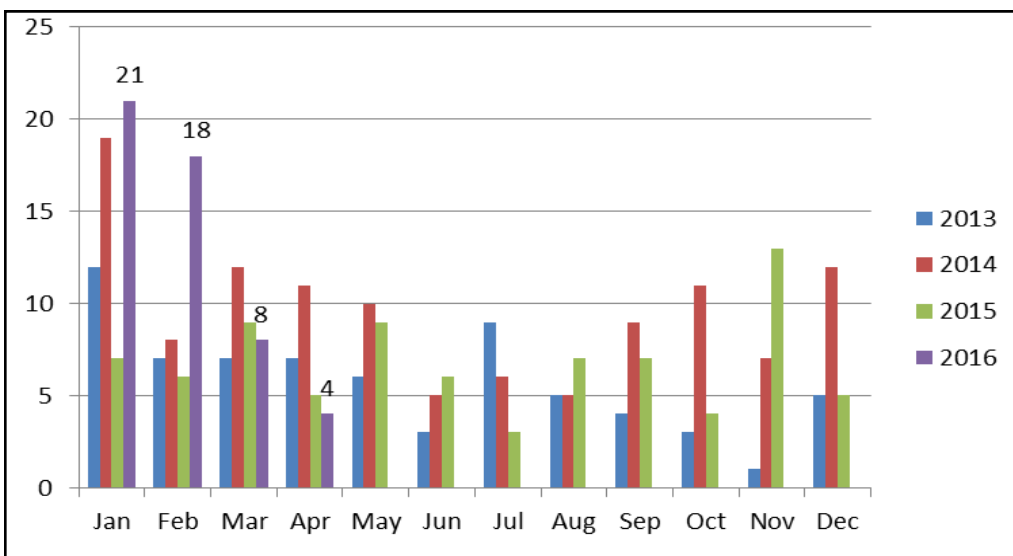


Figure 6. Number of *Salmonella Typhi* cases by month in South Africa, 2013-2016.