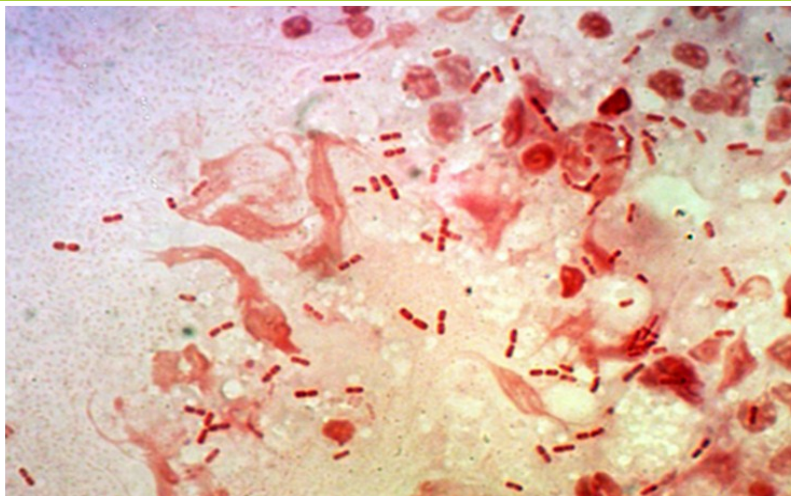


7 PHOTOQUIZ

July Photoquiz (right)

This eight-month-old infant presented with floppiness, hypothermia and failure to feed. A lumbar puncture was done, and a photograph of the Gram's stain of CSF is shown. What is the likely cause of this infant's condition? Please supply your answers in an email to kerriganm@nicd.ac.za with 'July Photoquiz' the subject line.



June photoquiz (left)

This 9-year-old boy was complaining of a sore throat, fever and swelling of the neck for 4 days. The differential diagnosis was diphtheria (*Corynebacterium diphtheriae*), streptococcal pharyngitis (*Group A streptococci*), oral thrush (*Candida spp.*), or pharyngitis due to *Arcanobacterium haemolyticum*, or Epstein-Barr virus. Diphtheria is distinctive as the white patches are actually necrotic tissue, and are adherent to the pharynx, while with other causes, the white patches are pus or fungal growth. (Photo courtesy <https://www.bestonlinemd.com/how-to-avoid-getting-diphtheria/>)